

Planetary Gearheads

0,3 Nm

For combination with
DC-Micromotors
Brushless DC-Motors
Stepper Motors

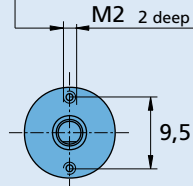
Series 12/4

	12/4	12/4K
Housing material	metal	metal
Geartrain material	metal	metal
Recommended max. input speed for:		
– continuous operation	5 000 rpm	5 000 rpm
Backlash, at no-load	$\leq 3^\circ$	$\leq 3^\circ$
Bearings on output shaft	sintered bearings	ball bearings, preloaded
Shaft load, max.:		
– radial (6 mm from mounting face)	≤ 4 N	≤ 20 N
– axial	≤ 3 N	≤ 5 N
Shaft press fit force, max.	≤ 15 N	≤ 5 N
Shaft play		
– radial (6 mm from mounting face)	$\leq 0,04$ mm	$\leq 0,02$ mm
– axial	$\leq 0,1$ mm	$= 0$ mm
Operating temperature range	$-30 \dots +100^\circ\text{C}$	$-30 \dots +100^\circ\text{C}$

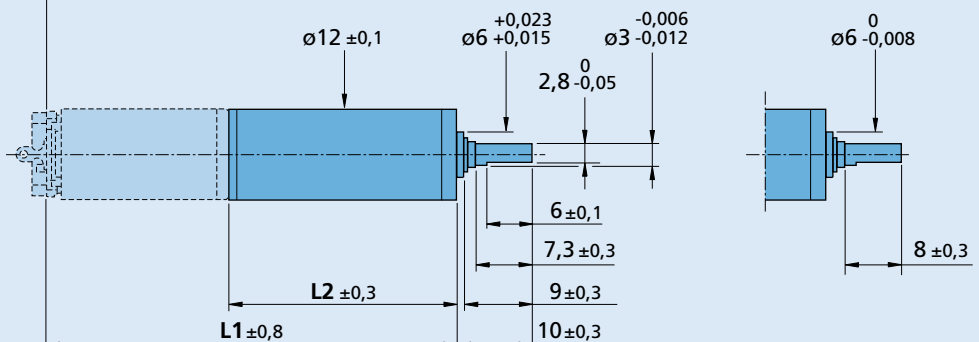
Specifications

	1	2	3	4	5
Number of gear stages					
Continuous torque	mNm 300	300	300	300	300
Intermittent torque	mNm 450	450	450	450	450
Weight without motor, ca.	g 12	15	18	21	24
Efficiency, max.	% 90	80	70	60	55
Direction of rotation, drive to output	=	=	=	=	=
Reduction ratio (exact)	4:1	16:1	64:1	256:1	1 024:1
L2 [mm] = length without motor	15,1	19,7	24,3	28,9	33,5
L1 [mm] = length with motor	1024A...S 38,8	43,4	48,0	52,6	57,2
	1224A...S 39,3	43,9	48,5	53,1	57,7
	1224A...SR 39,3	43,9	48,5	53,1	57,7
	1226A...B 41,1	45,7	50,3	54,9	59,5
	ADM1220...-09 32,5	37,1	41,7	46,3	50,9
	ADM1220S...-59 32,5	37,1	41,7	46,3	50,9

Orientation with respect to motor terminals not defined



For more combinations see table.
Example of combination with 1224...SR.



12/4

12/4 K